

TO LET

OPEN PLAN OFFICES

2,319 SQ FT - 5,264 SQ FT

(215.44 - 489.03 SQ M)

Ardmore House

40/42 George Street, Edinburgh, EH2 2LE

galbraithgroup.com

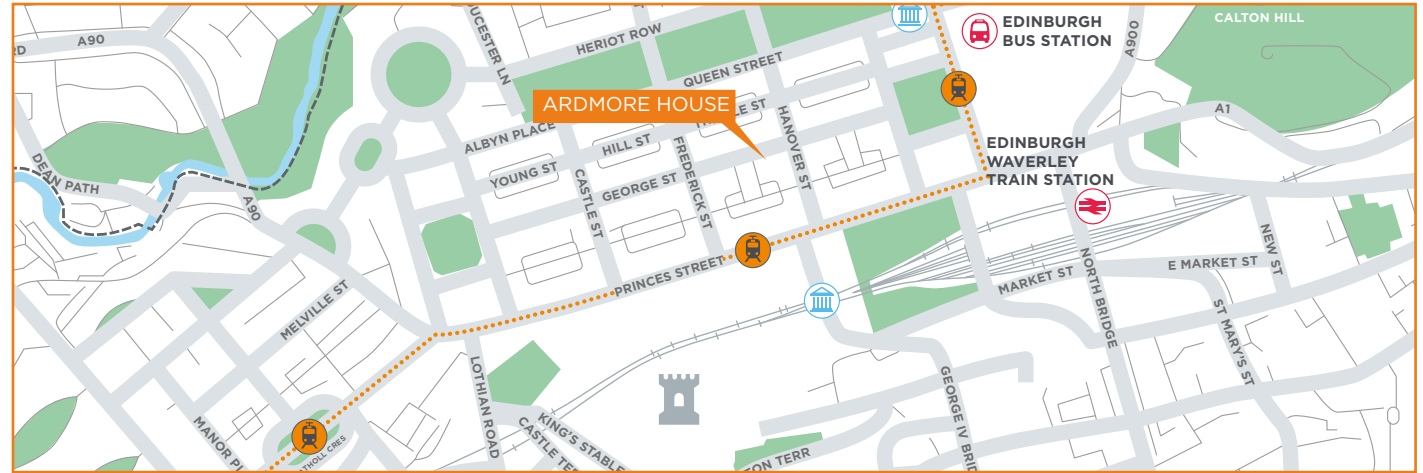
0131 240 6960



LOCATION

Ardmore House sits on the south side of George Street, in the heart of Edinburgh's central business district. The location is highly desirable providing a prestigious city centre address, alongside unrivalled leisure and retail amenities.

The building is highly accessible and is situated close to Edinburgh's Waverley Railway Station and Edinburgh Bus Station. St Andrew Square and Princes Street tram stops are within walking distance and provide convenient access west to Edinburgh Airport and north east to Leith.



DESCRIPTION

Ardmore House is a contemporary office building set behind a Georgian category 'C' listed facade. The building is split over 6 floors and provides open plan office accommodation on the ground and upper floors. The whole building benefits from a brand new VRF air-conditioning system.

Specification:



Perimeter trunking system



Male & female toilet facilities on every level



Full lift access serving all floors



EV charging points within secure basement car park



EPC



Changing rooms with shower, lockers, drying facilities and WC's



Secure bike storage



Brand new VRF air-conditioning system



Modern LED lighting



Door entry security system



Shower facilities on various levels



Indicative Only



Indicative Only

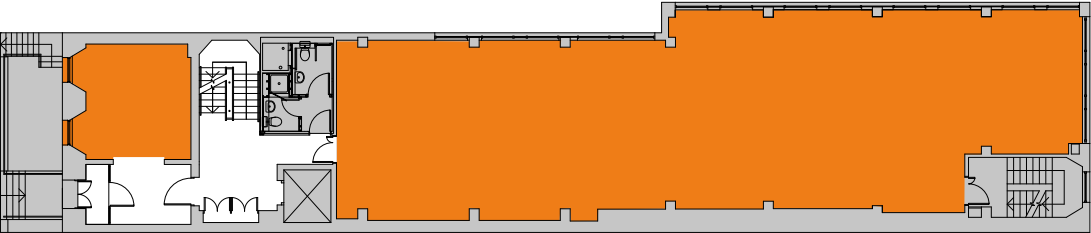


Indicative Only

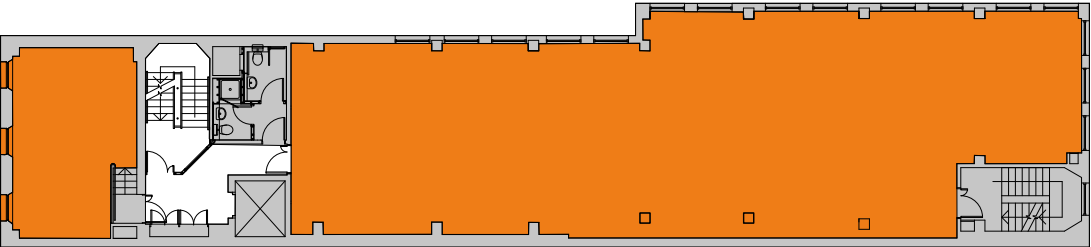
ACCOMMODATION

We have measured the premises in accordance with the RICS Code of Measuring Practice (6th Edition) with the net internal area calculated as follows:

Description	SQ FT	SQ M
Ground Floor	2,548	236.71
Second Floor	2,727	253.34



Ground Floor



Second Floor



Indicative Ground Floor Space Plan



Secure car parking



Upgraded shower facilities



Boardroom

Indicative Only

CAR PARKING

Car parking space is available by separate negotiation and is located within the secure basement car park.

LEASE TERMS

The premises will be offered on Full Repairing and Insuring terms. For further information, please contact the sole letting agents.

RATEABLE VALUE

In the usual way it will be the ingoing tenant's responsibility for paying the rates liability. We have been advised by the local authority that the premises have a current rateable value of:

Ground floor - £55,000 Second floor - £57,700

ENERGY PERFORMANCE CERTIFICATE

A-12.

VAT

VAT will be applicable.

LEGAL COSTS

Each party will be responsible for their own legal costs incurred. The tenant will be responsible for stamp duty/LBTT, registration dues.

FURTHER INFORMATION

Interested parties are advised to note interest with the letting agents.

Viewings are by appointment only. For additional information please contact:

Pamela Gray

07766 508 960

pamela.gray@galbraithgroup.com

David Stevenson

07917 424 363

david.stevenson@galbraithgroup.com

Leia Lomax

07795 354 668

leia.lomax@galbraithgroup.com

4th Floor, 18 George Street, Edinburgh, EH2 2PF

T: 0131 240 6960

galbraithgroup.com

Galbraith

The Agents for themselves and for the vendors or lessors of this property whose agents they are give notice that:

(i) the particulars are set out as a general outline only for the guidance of the intended purchasers or lessees and do not constitute, nor constitute part of, an offer or contract; (ii) all descriptions, dimensions, reference to condition and necessary permissions for use and occupation, and other details are given without responsibility and any intending purchasers or tenants should not rely on them as statements or representations of fact but must satisfy themselves by inspection or otherwise as to the correctness of each of them; (iii) no person in the employment of the Agents has any authority to make or give any representation or warranty whatever in relation to this property.

Galbraith is a trading name of CKD Galbraith LLP registered in Scotland number S0300208 with registered address 4th Floor, 18 George Street, Edinburgh, EH2 2PF

Date of publication: June 2025